

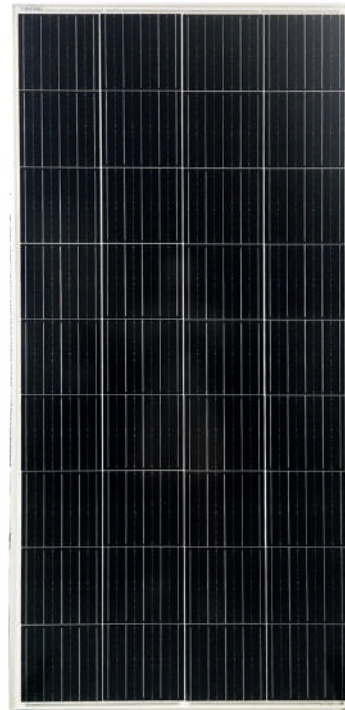
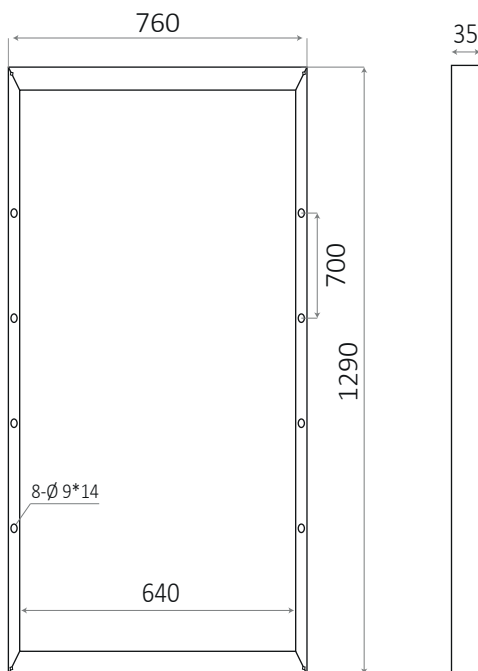
SOLAR PANEL

SM200W - 12V MONO CRYSTALLINE

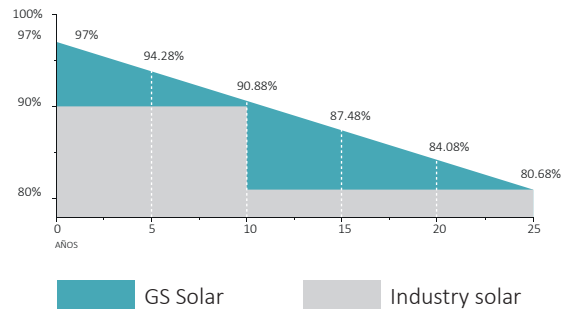
Keyfeatures

- **PID Free Module:**
AnFratim-PeID cell and encapsulation technology less module requires no module grounding which may PID
- **Higher Lifetime Power Yield:**
<0.5% annual power degradation
30 year linear power warranty
- **Saving BOS Cost:**
Designed for high voltage systems of up to 1000VDC, saving BOS cost
- **Improved Durability and Reliability:**
Dual glass reduces micro-cracking, snail trails, corruptions caused by moisture, sand, salt mist, etc.
- **Less Maintenance Requirement:**
Reduced soiling and snow coverage requires less maintenance and enhances fire safety
- **Aesthetically Pleasing Design:**
White back sheet maximizes module efficiency up to 95%; transparent back sheet increases light transmission
- **Strengthened Mechanical Support:**
5400Pa snow load; 2400Pa wind load

Dimensions



Guarantee



Electrical Specifications	
Model	SM200W-12V
Peak power(Pmax)	200W
Cell Efficiency	20%
Max. power volt.(Vmp)	18V
Max. Power current(Imp)	11.12V
Open circuit volt.(Voc)	22.80V
Short circuit current(Isc)	11.70A
Power Tolerance	±3%
Max. system voltage	1000V
Series fuse rating(A)	15
Number of bypass diode	2
Operating temperature	-40°(to+ 85°)
Maximum system voltage	1000V DC

STC: Irradiance 1000W/m², Module temperature 25°C, AM=1.5

Mechanical Characteristics	
Dimensions	1290*760*35mm
Weight	11.7 Kg
Solar Cells	36 cell in series
Cable Copper	(2.5mm ²)
Lengths	700mm (-) and 700mm(+)
Connector	Mc4 Plug Typs
Glass type	High transmits, Low Iron, 3.2mm Tempered Glass
Frame	Aluminium-alloy